



Rippon

STEEL INDUSTRIES

Stockist & Suppliers of : Stainless Steel, Carbon Steel, Alloy Steel, Flange, Pipe Fitting, Valves, Nut-Bolt, Ferrous & Non Ferrous Metals, Industrial Raw Material Etc.

+91 92651 38794

sales2ripponsteel@gmail.com, sales.ripponsteelind@gmail.com www.ripponsteel.in

Quality Policy

As Per Our Corporate Philosophy, We Will Always Strive

- ◆ To Improve The Internal Procedure Control And To Strengthen The Communication And Management.
- ◆ Make Best Of Our Effort To Deliver High Value Added Products To Broaden The Service Scope.
- ◆ To Promote Wide Variety Of Value Added Service And To Make Sure All Customers' requirements Are Met On Time.
- ◆ Promoting Technical Skill To Higher Level And Continuously Putting The Concept Of "quality That Inspires The Customer Confidence".

Vision

To Become An Enterprising Organization In The Field Of Pipes And Tubes Products. To Be Known For Quality Of Products And Excellent Service

Quality Assurance

We Strive To Deliver An Unmatched Quality Range Of Metal Products To Our Clients. We Bring Out The Best Of Us To Achieve The Utmost Quality Standards. There Is A Team Of Quality Auditors, Who Put In Lots To Bring Forth A Qualitative Range Of Products, Which Is In Adherence To The Global Quality Standards. They Make These Products To Pass Through Rigorous Quality Tests, So As To Avoid The Chance Of Any Defect In Our Product Range. Our Products Are Tested On Various Internationally Accepted Parameters, Which Are As Follows:

- ◆ Durability
- ◆ Corrosion Resistance
- ◆ Strength
- ◆ Malleability and Ductility
- ◆ Wear & Tear Resistance

Mission

To Satisfy Our Clients Needs By Providing High Quality Products At Competitive Price As Per The Schedule And To Maintain Long Term Relationship With Our Clients

Testing Facility Available

- ◆ Chemical Analysis
- ◆ Mechanical Test
- ◆ Hydrostatic
- ◆ Corrosion Test
- ◆ Radiography
- ◆ Ultrasonic Test



SHEET / PLATE / COIL / SHIMS

Stainless Steel & Duplex Steel

- Stainless Steel** : ASTM A 240, 304/304L/316/316L/316TI/
309/310/317/317L/321/347/409/410/430/
904L/SMO 254/AL6N
- Duplex & Super Duplex** : Standard
ASTM A240 - UNS S31803/S32205 (2205)
Lean
ASTM A240 - UNS S32304 (2304)
Super Duplex
ASTM A240 - UNS S32750 (2507)
ASTM A240 - UNS S32760 (Zeron 100)

Hi-Nickel & Titanium

Hi-Nickel

- Nickel** : ASTM B 162 N02200, N02201
- Inconel** : ASTM B 168 N06600, N06601, N06617
ASTM B 670 N07718, ASTM B 443 N06625
- Incoloy** : ASTM B 409 N08800, N08810
ASTM B 424 N08825, ASTM B 462 N08020
- Hastelloy** : ASTM B 575 N10276, N06022
ASTM B 333 N10665

Titanium

- Commercially Titanium Pure** : ASTM B 265
Gr.1 R 56250 (CP4) Gr.2 R 50400 (CP3)
Gr.3 R 50550 (CP2) Gr.4 R 50700 (CP1)
Gr.7 R 52400
- Titanium Alloys** : ASTM B 265
Gr.5 R 56400 (6Al-4V)
Gr.23 R 56401(6Al-4V-ELI)
Gr.12 R 53400

Cupro Nickel

- ASTM B 171 C70600 (90:10), C71500 (70:30)

Monel

- ASTM B127 N04400, DIN N05500

Alloy Steel, Carbon Steel / Mild Steel

- Alloy Steel Pipe** : ASTM A387 Gr. 11, 12, 22, 5, 91 (CL 1/2)
WP 12, WP 22, WP 91
- Carbon Steel** : ASTM A 36, S275 JR, IS 2062 Gr. A/B

Boiler Quality

- SA 516 Gr. 70

Hardox

- Hardox 400/500

Size

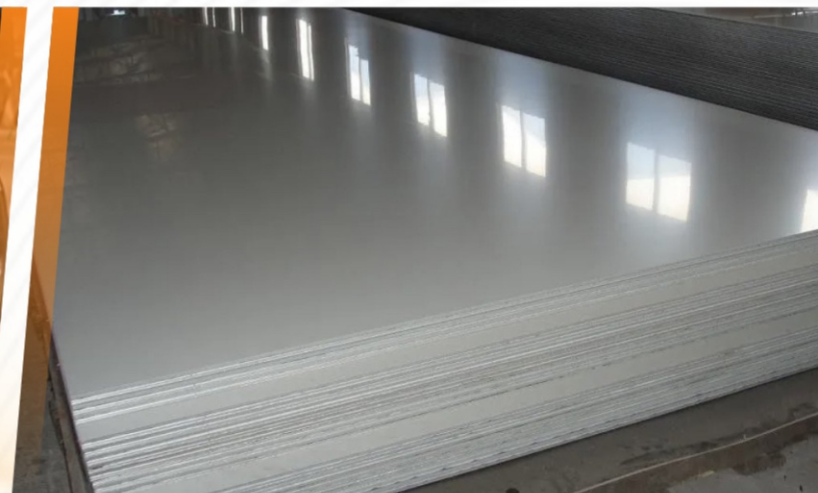
- Sheets** : 0.8mm to 4mm Thk. in 1000 upto
2000mm Width & 2000 upto 6000 Length
- Plates** : 5mm to 100 mm Thk. in 1000 upto
2000mm Width & 2000 upto 8000 Length
- Coils** : 0.1mm Thk. to 12mm Thk. in 10mm upto
1500 Width
- Foils** : 0.01mm Thk. to 0.3mm Thk. in any Width
- Strips** : 1mm Thk. to 100mm Thk. in 10mm upto
Width & 1000 upto 6000 Length

Test Certificate

- Manufacturer Test Certification
(En 3.1 & 3.2, IBR Test Certificate)

Specializing in

- Hi-Nickel & Stainless Steel Series
Inconel®, Incoloy®, Monel®, Hastelloy, Duplex® are Registered
Trade Marks of their Respective Owners.



STAINLESS STEEL PIPE DIMENSION AS PER ASTM AND WEIGHT KG. PER MTR. (ANSI B 36.19)

Nominal Bore		Outside Diameter	Schedule 5S		Schedule 10S		Schedule 20S		Schedule 40S		Schedule 80S		Schedule 160S		Schedule XXS	
mm	Inch	mm	Wt mm	Weight (Kg/mt)	Wt mm	Weight (Kg/mt)	Wt mm	Weight (Kg/mt)	Wt mm	Weight (Kg/mt)	Wt mm	Weight (Kg/mt)	Wt mm	Weight (Kg/mt)	Wt mm	Weight (Kg/mt)
3	1/8	10.3	1.24	0.276	1.24	0.28	1.5	0.33	1.73	0.37	2.41	0.47	-	-	-	-
6	1/4	13.7	1.24	0.390	1.65	0.49	2.00	0.58	2.24	0.631	3.02	0.80	-	-	-	-
10	3/8	17.1	1.24	0.490	1.65	0.63	2.00	0.74	2.31	0.845	3.20	1.10	-	-	-	-
15	1/2	21.3	1.65	0.800	2.11	1.00	2.30	1.07	2.77	1.27	3.75	1.62	4.75	1.94	7.47	2.55
20	3/4	26.7	1.65	1.03	2.11	1.28	2.55	1.52	2.87	1.68	3.91	2.20	5.54	2.89	7.82	3.63
25	1	33.4	1.65	1.30	2.77	2.09	2.55	1.94	3.38	2.50	4.55	3.24	6.35	4.24	9.09	5.45
32	1.1/4	42.2	1.65	1.65	2.77	2.70	3.00	2.90	3.56	3.38	4.85	4.47	6.35	5.61	9.70	7.77
40	1.1/2	48.3	1.65	1.91	2.77	3.11	3.00	3.55	3.68	4.05	5.08	5.41	7.14	7.25	10.16	9.54
50	2	60.3	1.65	2.40	2.77	3.93	3.00	4.24	3.91	5.44	5.54	7.48	8.74	11.1	11.07	13.44
65	2.1/2	73.0	2.11	3.69	3.05	5.26	4.00	6.81	5.16	8.63	7.01	11.4	9.53	14.9	14.2	20.39
80	3	88.9	2.11	4.51	3.05	6.45	4.00	8.37	5.49	11.30	7.62	15.2	11.1	21.3	15.24	27.65
100	4	114.3	2.11	5.84	3.05	8.36	4.50	12.18	6.02	16.07	8.56	22.3	13.49	33.54	17.12	41.03
125	5	141.3	2.77	9.47	3.40	11.57	5.00	16.80	6.55	21.8	9.53	31.97	15.88	49.11	19.05	57.43
150	6	168.3	2.77	11.32	3.40	13.84	6.35	25.36	7.11	28.3	10.97	42.7	18.2	67.56	21.95	79.22
200	8	219.1	2.77	14.79	3.76	19.96	6.35	33.31	8.18	42.6	12.7	64.6	23.0	111.2	22.23	107.8
250	10	273.1	3.40	22.63	4.19	27.78	6.35	41.77	9.27	60.5	12.7	96.0	28.6	172.4	25.40	155.15
300	12	323.9	3.96	31.25	4.57	36.00	6.35	49.7	9.52	73.88	12.7	132.0	33.32	238.76	25.40	186.97
350	14	355.6	3.96	34.36	4.78	41.3	7.92	67.80	11.13	94.59	19.05	158.08	35.71	281.70	-	-
400	16	406.4	4.19	41.56	4.78	47.29	7.92	77.83	12.7	123.30	21.41	203.33	40.46	365.11	-	-
450	18	457.2	4.19	46.80	4.78	53.42	7.92	87.71	14.27	155.80	23.8	254.36	45.71	466.40	-	-
500	20	508.0	4.78	59.25	5.54	68.71	9.53	117.14	15.09	183.42	26.19	311.2	49.99	564.68	-	-
600	24	609.6	5.54	82.47	6.35	94.45	9.53	141.12	17.48	255.41	30.96	442.08	59.54	808.22	-	-

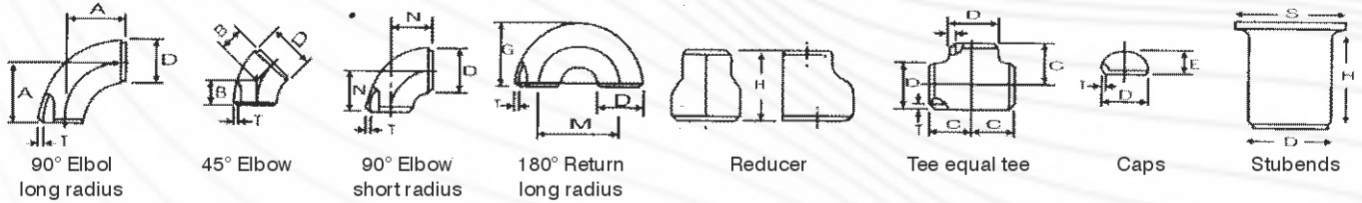
Carbon Steel And Alloy Steel Pipe Dimension - ANSI B 16.10

Nominal Pipe Size mm/ inch	OD mm	20	30	STD	40	60	XS	80	100	120	140	160	XXS	Shipping vol/CBM
15 1/2	21.3			2.77 1.27	2.77 1.27		3.73 1.62	3.73 1.62				4.78 1.95	7.47 2.55	0.0004
20 3/4	26.7			2.87 1.69	2.87 1.69		3.91 2.20	3.91 2.20				5.56 2.90	7.82 3.64	0.0007
25 1	33.4			3.38 2.50	3.38 2.50		4.55 3.24	4.55 3.24				6.35 4.24	9.09 5.45	0.0011
32 1 1/4	42.2			3.56 3.39	3.56 3.39		4.85 4.47	4.85 4.47				6.35 5.61	9.70 7.77	0.0017
40 1 1/2	48.3			3.68 4.05	3.68 4.05		5.08 5.41	5.08 5.41				7.14 7.25	10.15 9.56	0.023
50 2	60.3			3.91 5.44	3.91 5.44		5.54 7.48	5.54 7.48				8.74 11.11	11.07 13.44	0.036
65 2 1/2	73.0			5.16 8.63	5.16 8.63		7.01 11.41	7.01 11.41				9.53 14.92	14.02 20.39	0.0053
80 3	88.9			5.49 11.29	5.49 11.29		7.62 15.27	7.62 15.27				11.13 21.35	15.24 27.68	0.0079
90 3 1/2	101.6			5.74 13.57	5.74 13.57		8.08 18.63	8.08 18.63				-	-	0.0103
100 4	114.3			6.02 16.07	6.02 16.07		8.56 22.32	8.56 22.32		11.13 28.32		13.49 33.54	17.12 41.03	0.0130
125 5	141.3			6.55 21.77	6.55 21.77		9.53 30.97	9.53 30.97		12.70 40.28		15.88 49.11	19.05 57.43	0.0199
150 6	168.3			7.11 28.26	7.11 28.26		10.97 42.56	10.97 42.56		14.27 54.20		18.26 67.56	21.95 79.22	0.028
200 8	219.1	6.35 33.31	7.04 36.81	8.18 42.55	8.18 42.55	10.31 53.08	12.70 64.64	12.70 64.64	15.09 75.92	18.27 90.44	20.62 100.92	23.01 111.27	22.23 107.92	0.048
250 10	273.1	6.35 41.77	7.80 51.03	9.27 60.31	9.27 60.31	12.70 81.55	12.70 81.55	15.09 96.01	18.26 114.75	21.44 133.06	25.40 155.15	28.58 172.33	25.40 155.15	0.074
300 12	323.9	6.35 49.73	8.38 65.20	9.53 73.88	10.31 79.73	14.27 108.96	12.70 97.46	17.48 132.08	21.44 159.91	25.40 186.97	28.58 208.14	33.32 238.76	25.40 186.97	0.104
350 14	355.6	7.92 67.90	9.53 81.33	9.53 81.33	11.13 94.55	15.09 126.71	12.70 107.39	19.05 158.10	23.83 194.96	27.79 224.65	31.75 253.56	35.71 281.70		0.126
400 16	406.4	7.92 77.83	9.53 93.27	9.53 93.27	12.70 123.30	16.66 160.12	12.70 123.30	21.44 203.53	26.19 245.56	30.96 286.64	36.53 333.19	40.49 365.35		0.165
450 18	457.2	7.92 87.71	11.13 122.38	9.53 105.16	14.27 155.80	19.05 205.74	12.70 139.15	23.88 254.55	29.36 309.62	34.93 363.56	39.67 408.26	45.24 459.37		0.209
500 20	508.0	9.53 117.15	12.70 155.12	9.53 117.15	15.09 183.42	20.62 247.83	12.70 155.12	26.19 311.17	32.54 381.53	38.10 441.49	44.45 508.11	50.01 564.81		0.258
550 22	558.8	9.53 129.13	12.70 171.09	9.53 129.13	-	22.23 294.25	12.70 171.09	28.58 373.83	34.93 451.42	41.28 527.02	47.63 600.63	53.98 672.26		0.312
600 24	609.6	9.53 141.12	14.27 209.64	9.53 141.12	17.48 255.41	24.61 355.26	12.70 187.06	30.96 442.08	38.89 547.71	46.02 640.03	52.37 720.15	59.54 808.22		0.372
650 26	660.4	12.70 202.72	-	9.53 152.87	-		12.70 202.72							0.436
700 28	711.2	12.70 218.69	15.88 271.21	9.53 164.85	-		12.70 218.69							0.505
750 30	762.0	12.70 234.67	15.88 292.18	9.53 176.84	-		12.70 234.67							0.580
800 32	812.8	12.70 250.64	15.88 312.15	9.53 188.82	17.48 342.91		12.70 250.64							0.660
850 34	863.6	12.70 266.61	15.88 332.12	9.53 200.31	17.48 364.90		12.70 266.61							0.745
900 36	914.4	12.70 282.27	15.88 351.70	9.53 212.56	19.05 420.42		12.70 282.27							0.836
950 38	965.2			9.53 224.54			12.70 298.24							0.931
1000 40	1016.0			9.53 236.53			12.70 314.22							1.032
1050 42	1066.8			9.53 248.52			12.70 330.19							1.138
1100 44	1117.8			9.53 260.50			12.70 346.16							1.249
1150 46	1168.4			9.53 272.25			12.70 351.82							1.365
1200 48	1219.2			9.53 284.24			12.70 377.79							1.486

SI Units (Metric)

OD=mm
Wall Thickness=mm
weight=kg/m (Plain end mass)

DIMENSIONS OF BUTT-WELDING FITTING ANSI B-16.9/B-16.28/MSS SP 43

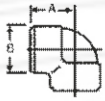


Nominal Pipe Size		Outside Diameter	Centre to Face				Back to Face			Centre to Centre			Length "L"	
Inch	mm	D	A R=1.5D	B	C	N R=1D	E	F	G	R	M	S	Short L	Long L
1/2	15	21.3	38.00	16.0	25.0	-	25.0	48.0	-	76.0		35.0	50.8	76.2
3/4	20	26.7	29.00	11.0	29.0	-	25.0	43.0	-	57.0		43.0	50.8	76.2
1	25	33.4	38.00	22.0	38.0	25.0	38.0	56.0	41.0	76.0	51.0	51.0	50.8	101.6
1.1/4	32	42.2	48.00	25.0	48.0	32.0	38.0	70.0	52.0	95.0	64.0	64.0	50.8	101.6
1.1/2	40	48.3	57.15	29.0	57.0	38.0	38.0	83.0	62.0	114.0	76.0	73.0	50.8	101.6
2	50	60.3	76.00	35.0	64.0	51.0	38.0	106.0	81.0	152.0	102.0	93.0	63.5	152.4
2.1/2	65	73.0	95.25	44.0	76.0	64.0	38.0	132.0	100.0	191.0	127.0	105.0	63.5	152.4
3	80	88.9	114.30	51.0	86.0	76.0	51.0	159.0	121.0	229.0	152.0	127.0	63.5	152.4
3.1/2	90	101.6	133.35	57.0	95.0	89.0	64.0	184.0	140.0	267.0	178.0	140.0	76.2	152.4
4	100	114.3	152.0	64.0	105.0	102.0	64.0	210.0	159.0	305.0	203.0	157.0	76.2	152.4
5	125	141.3	190.0	79.0	123.0	127.0	76.0	262.0	197.0	381.0	254.0	186.0	76.2	203.2
6	150	168.3	229.0	95.0	143.0	152.0	89.0	313.0	237.0	457.0	305.0	218.0	88.9	203.2
8	200	219.1	305.0	127.0	178.0	203.0	102.0	414.0	313.0	610.0	406.0	270.0	101.6	203.2
10	250	273.1	381.0	159.0	216.0	254.0	127.0	515.0	391.0	762.0	508.0	324.0	127.0	254.0
12	300	323.9	457.0	190.0	254.0	305.0	152.0	619.0	467.0	914.0	610.0	381.0	152.4	254.0
14	350	355.6	533.0	222.0	279.0	356.0	165.0	711.0	533.0	1067.0	711.0	413.0	152.4	305.0
16	400	406.4	610.0	254.0	305.0	406.0	178.0	813.0	610.0	1219.0	813.0	470.0	152.4	305.0
18	450	457.2	686.0	286.0	343.0	457.0	203.0	914.0	686.0	1372.0	914.0	533.0	152.4	305.0
20	500	508.0	762.0	318.0	381.0	508.0	229.0	1016.0	762.0	1524.0	1016.0	584.0	152.4	305.0
22	550	559.0	838.0	343.0	419.0	559.0	254.0	1118.0	838.0	1676.0	1118.0	614.4	152.4	305.0
24	600	610.0	914.0	381.0	432.0	610.0	267.0	1219.0	914.0	1829.0	1219.0	692.0	152.4	305.0
26	650	660.0	991.0	405.0	495.0	660.0	267.0							
28	700	711.0	1067.0	438.0	521.0	771.0	267.0							
30	750	762.0	1143.0	470.0	559.0	762.0	267.0							
32	800	813.0	1219.0	502.0	597.0	813.0	267.0							
34	850	864.0	1295.0	533.0	635.0	864.0	267.0							
36	900	914.0	1372.0	565.0	673.0	914.0	267.0							

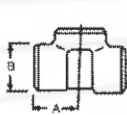


DIMENSIONS OF FORGED SCREWED FITTINGS

90° ELBOWS



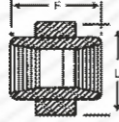
TEE



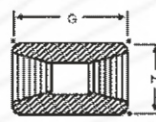
45° ELBOW



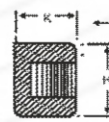
UNION



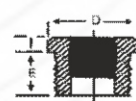
COUPLING



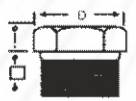
PIPE CAP



BUSHING



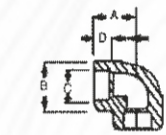
HEX HEAD PLUG



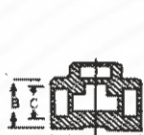
HALF COUPLING = G/2

DIMENSION IN MM OF FORGED SCREWED FITTINGS TO ANSI B-16.11 THREADED TO ASA B 2.1

NOM BORE	PIPE O.D.	3000 L.B.S.						COMMON FACTORS						6000 L.B.S.					
		A	B	C	G	H	K	D	E	F	I	J	L	A	B	C	G	H	K
1/8"	10.3	21	22	17	32	16	19	11	10	40	-	6	-	25	25	19	32	22	-
1/4"	13.7	25	25	19	35	19	25	16	11	43	4	6	32	29	33	22	35	25	27
3/8"	17.2	29	33	22	38	22	25	17.5	13	48	4	8	38	33	38	28	38	32	27
1/2"	21.3	33	38	25	48	29	32	22	15	51	5	8	46	38	46	29	48	38	33
3/4"	26.7	38	46	29	51	35	37	27	16	57	6	10	51	44	56	33	51	44	38
1"	33.4	44	56	33	60	44	41	35	19	64	6	10	60	51	62	35	60	57	43
1 1/4"	42.2	51	62	35	67	57	44	44.5	21	70	7	14	72	60	75	43	67	64	46
1 1/2"	48.3	60	75	43	79	64	44	51	21	79	8	16	80	64	84	44	79	76	48
2"	60.3	64	84	45	86	76	48	63.5	22	88	9	17	94	83	102	52	86	92	51
2 1/2"	73.02	83	102	52	92	92	60	76	27	118	10	21	122	95	121	64	92	108	64
3"	89.0	95	121	64	108	108	65	89	29	121	10	25	140	106	146	79	108	127	68
4"	114.5	114	152	79	121	140	68	117.5	32	150	13	25	180	114	152	79	121	159	75



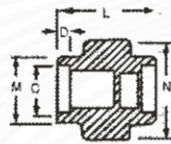
90° ELBOWS



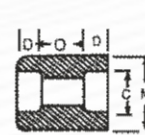
TEE



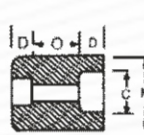
45° ELBOW



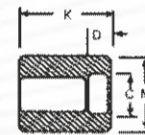
UNION



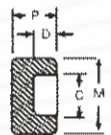
COUPLING



REDUCER



HALF COUPLING



CAP

SOCKET WELD FITTING TO ANSI B-16.11

NOM BORE	PIPE O.D.	3000 L.B.S.						COMMON FACTORS						6000 L.B.S.					
		A	B	K	J	L	M	N	P	Q	C	D	O	O	A	B	M	K	N
1/8"	10.3	22	18.5	26	16	40	17.3	32	17.5	10	10.7	10	5	8	22	22	20	25	46
1/4"	13.7	22	22	26	18	43	21.2	32	17.5	10	14.1	10	5	8	27	25	24	25	51
3/8"	17.2	25	25	26	19	48	25.4	36	19	10	17.6	10	3	9	27	28	28	26	60
1/2"	21.3	27	32	30	21	51	31	43	22	10	21.7	10	6	13	31	34	34	31	72
3/4"	26.7	34	38	36	24	57	37	50	25	13	27	13	6	13	37	42	41	35	80
1"	33.4	37	46	40	25	64	45.2	60	27	13	33.8	13	9	17	42	50	50	40	94
1 1/4"	42.2	42	56	40	29	70	55	70	30	13	42.6	13	9	17	47	59	58	41	100
1 1/2"	48.3	47	62	40	30	79	61.4	78	32	13	48.7	13	9	17	53	67	66	43	122
2"	60.3	56	75	52	37	89	75	95	38	13	61.2	16	15	23	59	84	83	55	
2 1/2"	73.02	60	92	52	48	114	91.3	125	38	16	73.8	16	14	24		102		56	
3"	89.00	76	110	52	51	127	108.8	140	44	16	89.8	16	14	24		121		58	
4"	114.50	88	137	58		150	136.9		48	19	115.5	19	14	24		152		64	

DIMENSIONS AND OTHER SPECIFICATIONS AS PER CUSTOMERS REQUIREMENTS ARE AVAILABLE ON REQUEST

+91 92651 38794

sales.ripponsteelind@gmail.com, sales2ripponsteel@gmail.com www.ripponsteel.in

COMPRESSION TUBE FITTINGS

ACCESSORIES



Front Ferrule



Back Ferrule



Ferrule

Tube to Female Connection



Female Connector



Female Elbow



Female Bulkhead Connector



Female Run Tee



Female Branch Tee

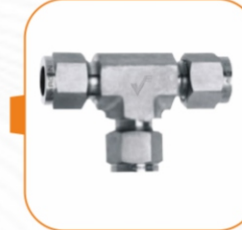
Tube to Union Connection



Union



Union Elbow



Union Tee



Union Cross



Bulkhead Union



Reducing Union

Tube to Male Connection



Male Connector



Male Elbow



Male Bulkhead Connector



Male Run Tee



Male Branch Tee

SS.TC (DAIRY) FITTINGS



Three Way Valve



Two Way Valve



Dairy tanker valve



Butterfly Valve with Union



Butterfly Valve Welded



Diaphragm valve



TC End Ball Valve



TC Ball Valve 3 Way



Butterfly Valve Sandwich Type



TC SIGHT GLASS



Side Glass with Union



TC End NRV



NRV Welded



NRV with Union (SMS)



In Line Filter with Union



C-Spanner



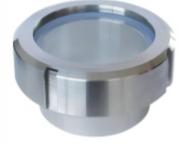
Welded Union



SMS Union



DIN Union



Side View Glass



Blind Nut



Side View Glass with Wiper



SMS Tee



SMS Bend



SMS Liner / Male Part



Sampling Valve



TC Sampling



Indian Spray Ball Fix



Spray Ball BSP



Spray Ball TC End



SMS/TC Cleaning Ball



Pin Type Imported Spray Ball



Flexible Hose Pipe



BSP Ball Valve Bar Stock



Butterfly Handle Ball Valve

BRANCH CONNECTORS

Stainless Steel & Duplex Steel

Stainless Steel : ASTM A 182F-304/304H/304L/316/316H/
316/316Ti 309, 310, 317L, 321, 347, 904L

Duplex &
Super Duplex : ASTM A182-F51, F53, F55

Hi-Nickel & Titanium

Hi-Nickel

Nickel : ASTM B 564 N02200, N02201
Inconel : ASTM B 564 N06600, N06601, N06617
ASTM B 564 N07718, ASTM B 564 N06625
Incoloy : ASTM B 564 N08800, N08810
ASTM B 564, N08825, ASTM B 564 N08020
Hastelloy : ASTM B 564 N10276, N06022
ASTM B 564 N10665, ASTM B 564 No6455

Titanium

Commercially : ASTM B 381
Titanium Pure Gr.1 R 56250 (CP4) Gr.2 R 50400 (CP3)
Gr.3 R 50550 (CP2) Gr.4 R 50700 (CP1)
Gr.7 R 52400
Titanium Alloys : Gr.11 R 52250
ASTM B 381
Gr.5 R 56400 (6Al-4V) Gr.23 R 56401
(6Al-4V-ELI) Gr.12 R 53400

Cupro Nickel

ASTM B 151 C70600 (90:10), ASTM B 151 C71500 (70:30)

Monel

ASTM B 564 N04400, N05500

Alloy Steel, Carbon Steel

Alloy Steel Pipe : ASTM A 182 F5, F9, F11,
F 12, F 22, F 91

Carbon Steel : A105

Low Temp. CS : ASTM A- 350 Lf2

Other Service : Hot Dip Galvanizing, Sand Blasting

Size

1/2" to 4" (Applicable Run Pipe Sizes are from outlet to 36")

Class

3000#, 6000#

Types

Weldolet	Nipolet
Socketlet	Latrolet
Elbolet	Sweepolet
Threadolet	

Test Certificate

Manufacturer Test Certification (En 3.1 & 3.2, IBR Test Certificate)

Specializing in

Hi-Nickel & Stainless Steel Series

Inconel, Incoloy, Monel, Hastelloy, Duplex[®] are Registered Trade Marks of their Respective Owners.



FASTENERS



TYPE OF BOLTS

- ◆ Hex Head Bolt
- ◆ Socket Cap Screw
- ◆ Carriage Bolt
- ◆ Flange Bolt
- ◆ Elevator Bolt
- ◆ Machine Bolt
- ◆ Grub Screw
- ◆ Set Screw
- ◆ Anchor Bolt
- ◆ Eye Bolt
- ◆ Hanger Bolt
- ◆ U Bolt
- ◆ J Bolt

TYPE OF NUTS

- ◆ Hex Nut
- ◆ Heavy Hex Nut
- ◆ Cap Nut
- ◆ Coupling Nut
- ◆ High Nut
- ◆ Flange Lock Nut
- ◆ Nylon Lock Nut
- ◆ Slotted Nut
- ◆ Custom Nut
- ◆ Wing Nut
- ◆ Jam Nut
- ◆ T Nut

TYPE OF SCREWS

- ◆ Self Drilling Screw
- ◆ Self Tapping Screw
- ◆ Machine Screw
- ◆ Particle Board Screw
- ◆ Roofing Screw
- ◆ Construction Screw
- ◆ Furniture Screw
- ◆ Wing Screw
- ◆ Cap Screw

TYPE OF WASHERS

- ◆ Flat Washer
- ◆ Spring Washer
- ◆ Dome Washer
- ◆ Countersunk Washer
- ◆ Hex Washer
- ◆ Lock Washer
- ◆ Square Washer
- ◆ Customized Washer

Stainless Steel : AISI 304,304L, 316, 316L, 310, 317, 317L, 321, 347, 410, 420,904L etc.

Alloy Steel : 4.6, 5.6, 6.6, 8.8, 10.9 & 12.9/'R', 'S', 'T' Conditions.

Carbon Steel : Bare Condition, Galvanized, Phosphetised, Cadium Plated, Hot Deep Galvanized, Bloodied, Nickel Chrome Plated, etc.

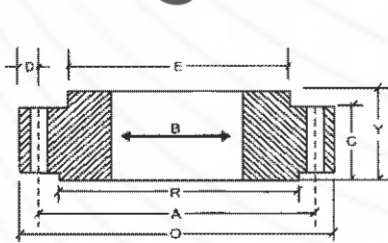
High Nickel Alloy : Monel, Nickel, Inconel, Hastelloy

Others : Copper, Brass, Bronze, Titanium, Tantalum, Bismuth, Aluminium, High Speed Steel, Zinc, Lead, etc.

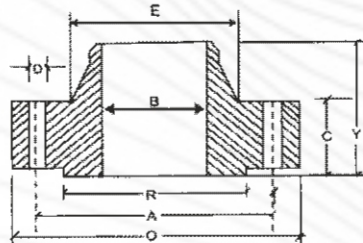
+91 92651 38794

sales.ripponsteelind@gmail.com, sales2ripponsteel@gmail.com www.ripponsteel.in

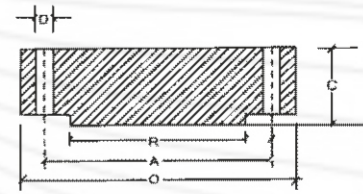
DIMENSIONS OF FORGED FLANGES ANSI B 16.5



SLIP-ON FLANGE



WELDING NECK FLANGE



BLIND FLANGE

Dimensions of Class 150 Flanges as per ANSI B 16.5

Nominal Pipe Size	Flange Dia	Dia of Bolt Circle	Dia of Bolt Holes	No. of Holes	Thk of Flange	Dia of Hub	Length through Hub			Dia of Bore		Dia of R/F	Depth of Socket	Pipe Dia	
							S/O & S/W	W/N	L/J	S/O & S/W	L/J				
(MM) (INCH.)	O	A	D	C	E	Y	Y	Y	B	B	R	F	X		
15	1/2	88.9	60.3	15.9	4	11.1	30.2	15.9	47.6	15.9	22.3	22.9	34.9	9.5	21.33
20	3/4	98.4	69.8	15.9	4	12.7	38.1	15.9	52.4	15.9	27.7	28.2	42.9	11.1	26.67
25	1	107.9	79.4	15.9	4	14.3	49.2	17.5	55.6	17.5	34.5	35.0	50.8	12.7	33.40
32	1 1/4	117.5	88.9	15.9	4	15.9	58.7	20.6	57.1	20.6	43.2	43.7	63.5	14.3	42.16
40	1 1/2	127.0	98.4	15.9	4	17.5	65.1	22.2	61.9	22.2	49.5	50.0	73.0	15.9	48.26
50	2	152.4	120.6	19.0	4	19.0	77.8	25.4	63.5	25.4	62.0	62.5	92.1	17.5	60.31
65	2 1/2	177.8	139.7	19.0	4	22.2	90.5	28.6	69.8	28.6	74.7	75.4	104.8	19.0	73.02
80	3	190.5	152.4	19.0	4	23.8	107.9	30.2	69.8	30.2	90.7	91.4	127.0	20.6	88.90
100	4	228.6	190.5	19.0	8	23.8	134.9	33.3	76.2	33.3	116.1	116.8	157.2	-	114.30
125	5	254.0	215.9	22.2	8	23.8	163.5	36.5	88.9	36.5	143.8	144.5	185.7	-	141.30
150	6	279.4	241.3	22.2	8	25.4	192.1	39.7	88.9	39.7	170.7	171.4	215.9	-	168.27
200	8	342.9	298.4	22.2	8	28.6	246.1	44.4	101.6	44.4	221.5	222.2	269.9	-	219.07
250	10	406.4	361.9	25.4	12	30.2	304.8	49.2	101.6	49.2	276.3	277.4	323.8	-	273.05
300	12	482.6	431.8	25.4	12	31.8	365.1	55.6	114.3	55.6	327.1	328.2	381.0	-	323.85
350	14	533.4	476.2	28.6	12	34.9	400.0	57.1	127.0	79.4	359.1	360.2	412.7	-	355.60
400	16	596.9	539.7	28.6	16	36.5	457.2	63.5	127.0	87.3	410.5	411.2	469.9	-	406.40
450	18	635.0	577.8	31.7	16	39.7	504.8	68.3	139.7	96.8	461.8	462.3	533.4	-	457.20
500	20	698.5	635.0	31.7	20	42.9	558.8	73.0	144.5	103.2	513.1	514.3	584.2	-	508.00
600	24	812.8	749.3	34.9	20	47.6	663.6	82.5	152.4	111.1	615.9	615.9	692.1	-	609.60

All Dimensions are in Millimeters • Flanges except Lap Joint will be furnished with (1.6mm) Raised Face, which is included in Thickness (C) and Length through Hub (Y).

Dimensions of Class 300 Flanges as per ANSI B 16.5

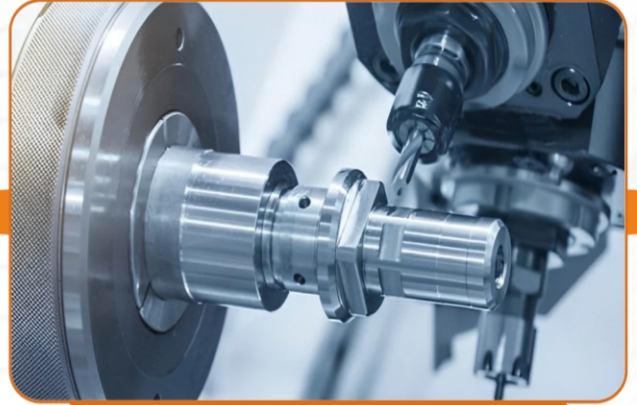
Nominal Pipe Size	Flange Dia	Dia of Bolt Circle	Dia of Bolt Holes	No. of Holes	Thk of Flange	Dia of Hub	Length through Hub			Dia of Bore		Dia of R/F	Depth of Socket	Pipe Dia	
							S/O & S/W	W/N	L/J	S/O & S/W	L/J				
(MM) (INCH.)	O	A	D	C	E	Y	Y	Y	B	B	R	F	X		
15	1/2	95.2	66.7	15.9	4	14.3	38.1	22.2	52.4	22.2	22.3	22.9	34.9	9.5	21.33
20	3/4	117.5	82.5	19.0	4	15.9	47.6	25.4	57.1	25.4	27.7	28.2	42.9	11.1	26.67
25	1	123.8	88.9	19.0	4	17.5	54.0	27.0	61.9	27.0	34.5	35.0	50.8	12.7	33.40
32	1 1/4	133.3	98.4	19.0	4	19.0	63.5	27.0	65.1	27.0	43.2	43.7	63.5	14.3	42.16
40	1 1/2	155.6	114.3	22.2	4	20.6	69.8	30.2	68.3	30.2	49.5	50.0	73.0	15.9	48.26
50	2	165.1	127.0	19.0	8	22.2	84.1	33.3	69.8	33.3	62.0	62.5	92.1	17.5	60.31
65	2 1/2	190.5	149.2	22.2	8	25.4	100.0	38.1	76.2	38.1	74.7	75.4	104.8	19.0	73.02
80	3	209.5	168.3	22.2	8	28.6	117.5	42.9	79.4	42.9	90.7	91.4	127.0	20.6	88.90
100	4	254.0	200.0	22.2	8	31.8	146.0	47.6	85.7	47.6	116.1	116.8	157.2	23.8	114.30
125	5	279.4	234.9	22.2	8	34.9	177.8	50.8	98.4	50.8	143.8	144.5	185.7	-	141.30
150	6	317.5	269.9	22.2	12	36.5	206.4	52.4	98.4	52.4	170.7	171.4	215.9	-	168.27
200	8	381.0	330.2	25.4	12	41.3	260.3	61.9	111.1	61.9	221.5	222.2	269.9	-	219.07
250	10	444.5	387.3	28.6	16	47.6	320.7	66.7	117.5	95.2	276.3	277.4	323.8	-	273.05
300	12	520.7	450.8	31.7	16	50.8	374.6	73.0	130.2	101.6	327.1	328.2	381.0	-	323.85
350	14	584.2	514.3	31.7	20	54.0	425.4	76.2	142.9	111.1	359.1	360.2	412.7	-	355.60
400	16	647.7	571.5	34.9	20	57.2	482.6	82.5	146.0	120.6	410.5	411.2	469.9	-	406.40
450	18	711.2	628.5	34.9	24	60.3	533.4	88.9	158.7	130.2	461.8	462.3	533.4	-	457.20
500	20	774.7	685.8	34.9	24	63.5	587.4	95.2	161.9	139.7	513.1	514.3	584.2	-	508.00
600	24	914.4	812.8	41.3	24	69.8	701.7	106.4	188.3	152.4	615.9	615.9	692.1	-	609.60

All Dimensions are in Millimeters • Flanges except Lap Joint will be furnished with (1.6mm) Raised Face, which is included in Thickness (C) and Length through Hub (Y).

CUSTOMIZED JOB WORK AND FABRICATION CAN BE DONE AS PER CUSTOMER DRAWING AND AS PER REQUIREMENTS ALSO



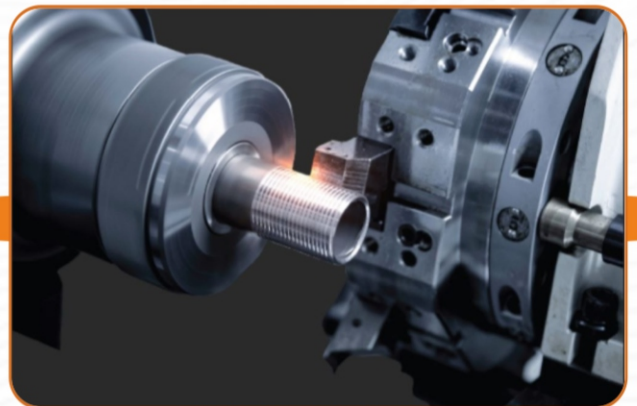
CNC CONTROLLER



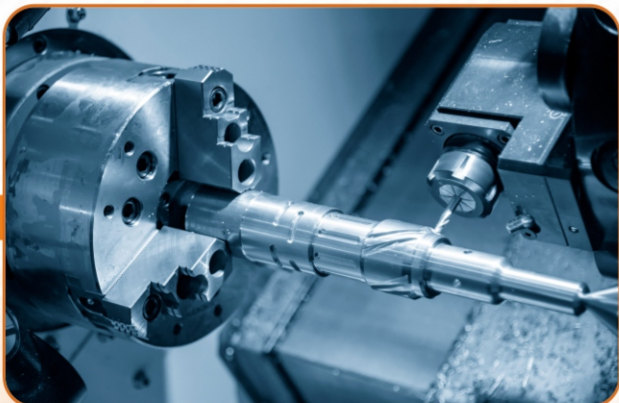
CNC TURNING MACHINE



HH MACHINING



CNC TURNING MACHINING



CNC TURNING



CNC MACHINE

COPPER STEEL PRODUCTS



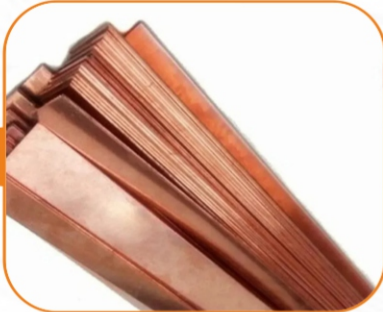
HEX BAR



PIPE



COIL



PATTA-PATTI



ROUND BAR



SHEET

ALUMINIUM STEEL PRODUCTS



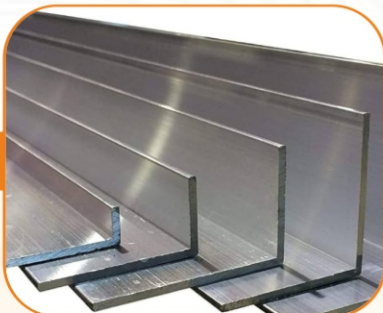
CHECKERED SHEET



PIPE



PATTA-PATTI



ANGLE



ROUND BAR



COIL

FORMULA OF WEIGHT

WEIGHT OF STAINLESS STEEL PIPES & TUBES

O.D. (mm) - W.T. (mm) X W.T. (mm) X 0.02466 = kg. per Meter
 O.D. (mm) - W.T. (mm) X W.T. (mm) X 0.00756 = kg. per Feet

WEIGHT OF STAINLESS STEEL ROUNDS

Dia (mm) X Dia (mm) X 0.00623 = Kg. Per Meter
 Dia (mm) X Dia (mm) X 0.0019 = Kg. Per Feet

WEIGHT OF STAINLESS STEEL SQUARE BARS

Dia (mm) X Dia (mm) X 0.00787 = Kg. Per Meter
 Dia (mm) X Dia (mm) X 0.0024 = Kg. Per Feet

WEIGHT OF STAINLESS STEEL HEXAGONAL RODS

Dia (mm) X Dia (mm) X 0.00680 = Kg. Per Meter
 Dia (mm) X Dia (mm) X 0.002072 = Kg. Per Feet

WEIGHT OF STAINLESS STEEL FLAT BAR

Width (mm) X Thk (mm) X 0.00798 = kg. Per Meter
 Width (mm) X Thk (mm) X 0.00243 = kg. Per Feet

WEIGHT OF STAINLESS STEEL SHEETS

Length (Mtr.) X Width (Mtr.) X Thk (mm) x 8 = kg. per Sheet
 Length (Ft.) X Width (Ft.) X Thk (mm) x 3/4 = kg. per Sheet

WEIGHT OF STAINLESS STEEL CIRCLES & BLANKS

Dia (mm) X Dia (mm) X Thk. (mm)/160 = Gmg. Per Pcs.
 Dia (mm) X Dia (mm) X Thk. (mm) X 0.000063 = Kg. Per Pcs.

WEIGHT OF BRASS/COPPER PIPES

Length (mm) x W.T. (mm) X W.T. (mm) X 0.0260 = Kg. Per Meter

WEIGHT OF CARBON STEEL SHEETS - PLATES

Length (Mtr.) x Width (Mtr.) X Thk (mm) X 7.85 = Kg. Per Sheet

WEIGHT OF LEAD PIPES (APPRO.)

O.D. (mm) - W.T. (mm) X W.T. (mm) X 0.0345 = Kg. Per Meter

WEIGHT OF ALUMINIUM PIPES (APPRO.)

O.D. (mm) - W.T. (mm) X W.T. (mm) X 0.0082 = Kg. Per Meter

WEIGHT OF LEAD SHEETS (APPRO.)

Length (mtr.) x Width (mtr.) X Thk. (mm) X 11.2 = Kg. Per Sheet

WEIGHT OF ALUMINIUM SHEETS (APPRO.)

Length (Mtr.) x width (Mtr.) X Tnk. (mm) X 2.69 = Kg. Per Sheet

TENSILE STRENGTH CONVERSION TABLE

1)	Kg/mm ² X 9.81	= N/mm ² =MPa
2)	Psi X 0.0007	= Kg/mm ²
3)	KSi X 1000	= PSi
4)	Kg/mm ² X 1.422	= KSi

APPLICATION OF INDUSTRIES



+91 92651 38794

sales.ripponsteelind@gmail.com, sales2ripponsteel@gmail.com www.ripponsteel.in




Rippon

STEEL INDUSTRIES


Stockist & Suppliers of: Stainless Steel, Carbon Steel, Alloy Steel, Flange, Pipe Fitting, Valves, Nut-Bolt, Ferrous & Non Ferrous Metals, Industrial Raw Material Etc.

 SANJAY PATEL

 +91 92651 38794



 sales2ripponsteel@gmail.com  www.ripponsteel.in
sales.ripponsteelind@gmail.com

 Shed No FF - 7, Shree Rajeshwar Industrial Estate - 2,
Inside Janak Estate, Chakudia Mahadev Road, Rakhial,
Ahmedabad - 380023

Designing & Printing by:
Rajasthan Printers 9898 99 1272

